



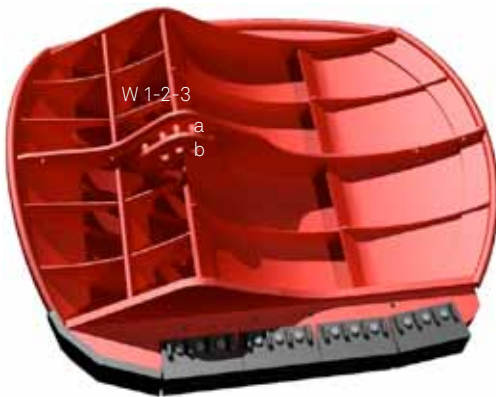
Mørenot Fishery AS

Tore Ringstad, sales manager

Tel.: +47 977 55 436

tore.ringstad@morenot.no

www.morenot.com/fishery



W: Main wire connection
a-b: Upper and lower towing point
B: Middle chain connection on back
C: Upper & lower chain connection on back

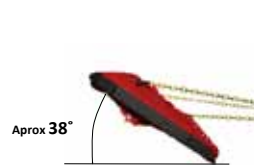
Increase spread (AOA): Connect to a higher no. in point W and/or in point B
Decrease spread (AOA): Connect to a lower no. in point W and/or in point B

Tilt door inwards: If the doors tend to fall on back, the lower chain should be shorten in point C
Tilt door outwards: If the doors tends to fall on wire side, the upper chain should be shorten in point C

IMPORTANT – DO IT LINK BY LINK

Tilt door outwards: If the doors tend to tilt inwards in shallow waters fishing, move shackle in towing point b

Chain lengths: Chain lengths are from attachment point on door (including shackle) to the connection ring



**SUGGESTED STARTING POINT:
MEDIUM AOA SETTINGS**

W 2a: Main wire connection
B 2: Middle chain connection
C: Upper and Lower chain connection



DECREASE AOA: MINIMUM AOA SETTINGS

W 1a: Main wire connection
B 1: Middle chain connection
C: Upper and Lower chain connection



INCREASE AOA: MAXIMUM AOA SETTINGS

W 3a: Main wire connection
B 3: Middle chain connection
C: Upper and Lower chain connection