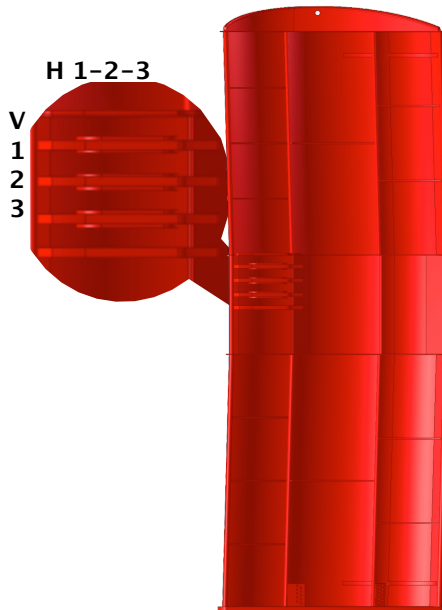




Mørenot Fishery AS

Tore Ringstad, sales manager Tel.:
+47 977 55 436
tore.ringstad@morenot.no
www.morenot.com/fishery

Frontside



Injector Monarch Manual

H 1-2-3: Main horizontal wire AOA adjustments
V 1-2-3: The 3 vertical towing pint point on wire side
B1/B2: Top backstop adjustments
B3/B4: Bottom backstop adjustments

Increase AOA: Connect to a higher no. in point **H** and/or in point **B**
Reduce AOA: Connect to a lower no. in point **H** and/or in point **B**
(Note: it is NOT advised to use horizontal hole 1 in point B on back together with minimum AOA on front in point H1)

Tilt door inwards: Connect to B1 and B3 or/and V1
Tilt door outwards: Connect to B2 and B4 or/and V3

Tilt door forwards: Bottom backstop (B3/B4) to a higher No. or/and top backstop (B1/B2) to a lower No.
Tilt door backwards: Top backstop (B1/B2) to a higher No. or/and bottom backstop (B3/B4) to a lower No.

1-2-3-4-5



Backside



NEUTRAL SETTINGS

Main wire connection in H2 and V2
Top backstop connection in B1:3
Bottom backstop connection in B4:3

MINIMUM SETTINGS

Main wire connection in H1 and V2
Top backstop connection in B1:2
Bottom backstop connection in B4:2

MAXIMUM SETTINGS

Main wire connection H3 and V2
Top backstop connection B1:5
Bottom backstop connection B4:5

TILT DOOR FORWARD (example)

B1/B2 in 1 & B3/B4 in 5

TILT DOOR BACKWARD (example)

B1/B2 in 5 & B3/B4 in 1