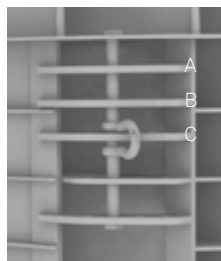
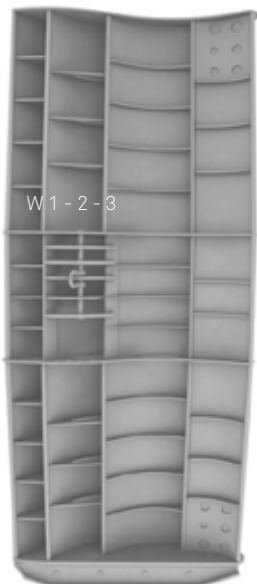




Mørenot Fishery AS

Tore Ringstad, sales manager
Tel.: +47 977 55 436
tore.ringstad@morennot.no
www.morennot.com/fishery

A
B
C



W: Main wire connection
C-D: Upper backstop connection
E-F-G: Lowerbackstop connection

To increase spread (AOA): Connect to a higher no. in point W
To decrease spread (AOA): Connect to a lower no. in point W

Tilt door inwards: C and E or F on back & A on front
Tilt door outwards: D and F or G on back & C on front

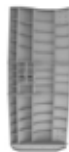
Tilt door forward: Upper back stop to a higher no. in point C or D
Tilt door backwards: Lower back stop to a higher no. In point E or F or G

C
D

1-2-3-4-5



E
F
G



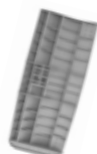
SUGGESTED STARTING POINT: NEUTRAL SETTING

W 2B: Main wire connection
C 3: Upper back stop connection
F 3: Lower back stop connection



TILT DOOR FORWARD SETTING

W 2B: Main wire connection
C 3: Upper back stop connection
G4: Lower back stop connection



TILT DOOR BACKWARD SETTING

W 2B: Main wire connection
C 4: Upper back stop connection
F 3: Lower back stop connection